

# BAJA PRESBYTERIAN MISSIONS NEWSLETTER

Since 1970

Tijuana • Mexicali • Tecate • Ensenada • San Jose de Cabo

9189 Grossmont Blvd.  
La Mesa, CA 91941  
(619) 469-6101  
bobbattenfield@sbcglobal.net

July 2009

## Tijuana Churches Planted by Korean PC Are Turned Over to Mexican Presbytery

With the retirement of **Rev. Luis Lee**, a Korean Presbyterian missionary to Mexico, all three churches planted a dozen years ago in Tijuana by the **National Korean Presbyterian Church in Seoul** have now been turned over to the **Presbytery of the Northwest Border of the National Presbyterian Church of Mexico**.

**Monte Sinai** will be served by **Rev. Enrique Romero** and **Rev. Job Alameda** will be the pastor of **Monte Sion**. Together, they are also leading an effort to start home Bible studies. The third church, **Monte Horeb**, was transferred to the Mexican Presbytery several years ago. Its pulpit supply draws from **Rev. Francisco Juachin** and trained elders of the **El Buen Pastor Church** in Tijuana. Previously, Pastor Lee, who joined the Mexican Presbytery as a fraternal member, maintained oversight of the "Monte" missions he founded while the Presbytery assigned young seminary graduates as pastors. The plan was to turn them over to the Mexican church.

## Roland and Kay Taylor Memorial Trust Sustains Baja Missions

**Roland and Kay Taylor**, founders of **Native Missions** which became **Baja Presbyterian Missions** in 1993, placed four trust accounts with the **Presbyterian Foundation** during their lifetimes, with interest to be paid quarterly. Three now pay directly to the Mexican Presbytery's checking account at a bank in the USA. Funds are withdrawn by electronic fund transfer. Interest from the fourth, and largest, trust account is sent by the Foundation to **La Jolla Presbyterian Church**, which was the Taylor's home church. La Jolla passes the payments it receives on to BPM.

Thus, funds for construction of new churches are held by both BPM and the Mexican Presbytery. BPM's account is restricted to construction projects only. The accounts that pay directly to the Mexican Presbytery can be used for church operations as well as construction. The combined total is about \$112,000 at this time.

The new model for developing new churches in Baja is for pastors and trained elders to start a home Bible Study with the hope that it will draw more families and grow to become a mission church.

## BPM Board Members Ready to Make Presentations to Church Mission Committees

It seems our slogan -- "**Mission Opportunities Close to Home**" -- is ringing true to local church mission committees in recent months as the economy has declined.

*"There's an appeal to continue giving our outreach dollars to Baja Missions because we can more readily see the results right across our border with Mexico," said one mission chair.*

To keep current with the mission committees of our donor churches, board members are scheduling presentations with church mission committees. At this date, we have visited with La Jolla, Faith, and Chula Vista, with Rancho Bernardo coming in July. To schedule a presentation, contact Bob Battenfield at 619-469-6101 or [bobbattenfield@sbcglobal.net](mailto:bobbattenfield@sbcglobal.net)

It gets confusing sometimes with the various organizations in the ministry in Baja, and the various routes through which donor funds are received. See the **Organization Chart** on Page 3 to increase your understanding of these relationships.

*Baja Presbyterian Missions, an endorsed project of the Presbytery of San Diego, is your church's bridge to working with your brothers and sisters in Christ south of the border.*

# PCUSA World Missions Assigns Rachel Anderson As Missionary to San Diego-Baja California Area

It was touch-and-go for a while, but funds for a replacement for the **Rev. Bill Soldwisch**, who likes to call himself “your closest foreign missionary,” were found in the budget for **PCUSA World Missions**. Soldwisch retires at the end of November '09 after having served since 1985 as co-director of **Pueblos Hermanos of Presbyterian Border Ministry** for the San Diego-Tijuana area.

**Rev. Rachel Anderson**, a 2004 graduate of **Columbia Theological Seminary** and currently campus life coordinator for a non-profit Christian school in South Carolina, has accepted the call after visiting here in early June. Her previous experience includes work with **Habitat for Humanity International** in Jordan and volunteer service for women’s rights on the Pakistan and Afghanistan border.

The Pueblos Hermanos board voted unanimously to accept Anderson. They are helping work out details of her relocation to Tijuana. She will take a Spanish language course as she becomes familiar with the mission field in Baja.

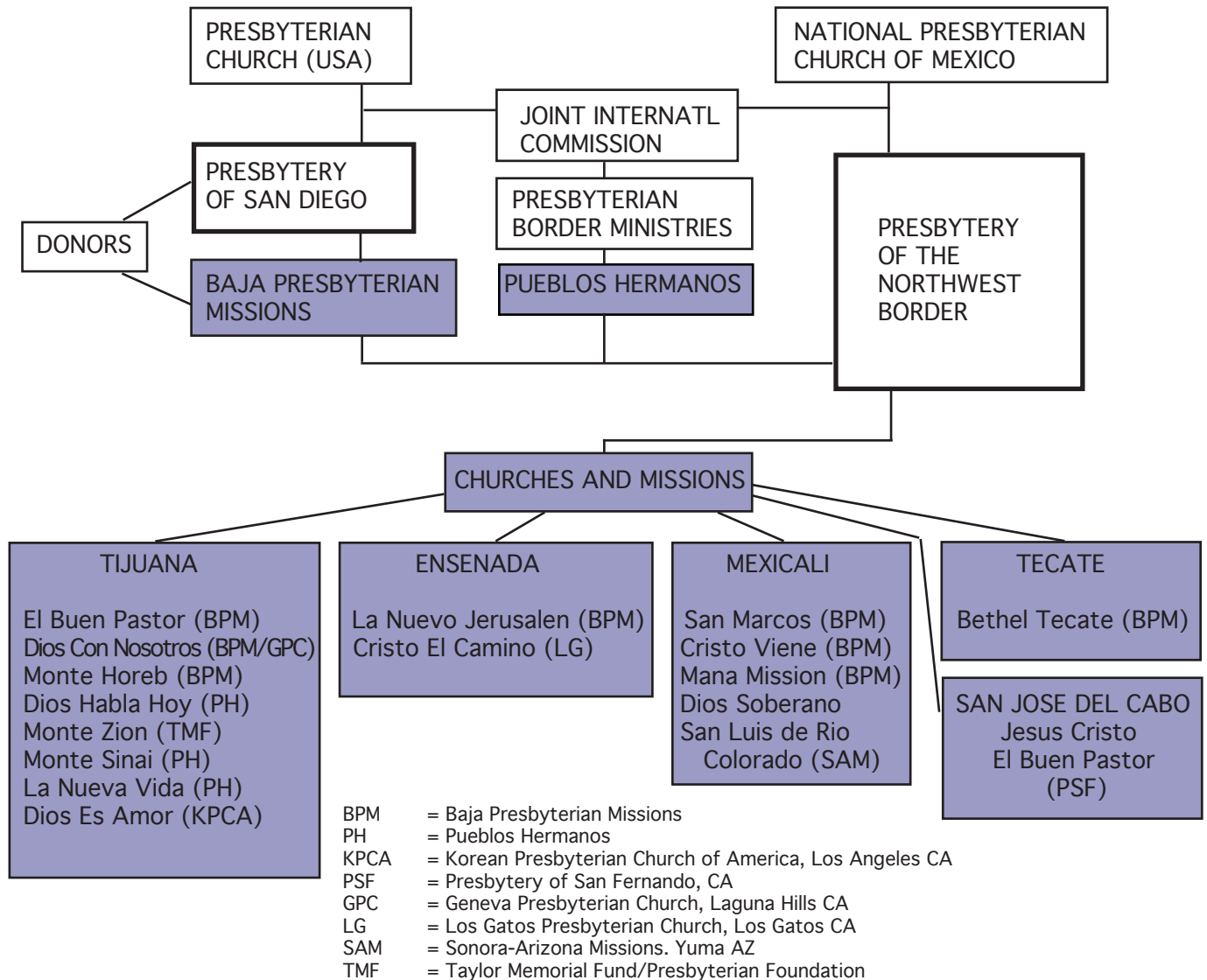


*At left, Rachel Anderson meets with EP Clark Cowden and Mission Chair Bill Taylor. Above, with Robelio Roblero, president of the Mexican Presbytery. Below with PH Board members Nicasio and Marta Rojas, Enrique and Delfina Romero, Bill Soldwisch and Job Alameda. Photos by Bob Battenfield.*



***Baja Presbyterian Missions works in close partnership with Pueblos Hermanos, raising funds to help the Mexican Presbyterian Church plant and grow missions and churches in Baja California since 1970.***

## CHART of ORGANIZATION and SUPPORT



### Understanding Missions in Baja...

**Baja Presbyterian Missions**, an endorsed project of the Presbytery of San Diego (PCUSA), directly supports pastors at nine sites in Baja California. BPM enjoys a long-standing and effective relationship with other mission organizations that support the growth and maintenance of the Mexican Presbyterian Church in Baja California. These organizations include **Pueblos Hermanos**, a bi-national mission outreach program of Presbyterian Border Ministries, which is directed by the Border Ministry Council, a body created by our two National Church General Assemblies; and the **Southcoast Presbytery of the Presbyterian Church of America (PCA)**, which is supporting the Mexican pastors with education and training, and encouraging new missions. **Presbytery of San Fernando** and **Geneva Presbyterian Church, Laguna Hills**, both initially supported the construction of the mission in San Jose de Cabo; San Fernando continues. BPM supports the pastor's salary and monitored the building fund. South of Yuma, the **Sonora-Arizona Missions (SAM)** enabled the planting of a new mission in San Luis de Rio Colorado, with start-up funding help from both Pueblos Hermanos and BPM. **Los Gatos Presbyterian Church** support the Cristo El Camino Mission. **Chuck and Pat Ford of Huntington Beach** launched their own campaign and successfully raised funds to build a Christian Education building for the La Nueva Jerusalem Church in Ensenada. BPM's most recent campaign was to build a Sanctuary for Dios Con Nosotros Church in Tijuana. **The Roland and Kay Taylor Memorial Trust Fund** provides construction funds for new churches.

In recent years, these relationships have become even more international with the arrival of two Korean bodies -- the **Korean National Presbyterian Church of Seoul, Korea**, and the **Korean Presbyterian Church of America, Los Angeles**. KNPC sent a missionary to Tijuana. He affiliated with the Mexican Presbytery and founded three churches which after some dozen years have been turned over to the Mexican Presbytery. Monte Horeb, is now supported by BPM, Monte Zion by PH and Monte Sinai temporarily by the Taylor Fund. KPCA has built the Dios Es Amor Mission in La Planecie, Tijuana, with help from Pueblos Hermanos, and has also built and equipped a Mexican Presbyterian seminary in Mexicali. With about 50 students, a new class starts each September.

## THANK YOU TO OUR DONOR CHURCHES

Baja Missions Board of Directors expresses its gratitude and appreciation to the church pastors, mission committees and congregations which support us.

Following is a list of our donor churches for 2008:

**Brawley Presbyterian**  
**Chula Vista Presbyterian**  
**El Cajon First Presbyterian**  
**Faith Presbyterian**  
**Fletcher Hills Presbyterian**  
**Geneva, Laguna Hills**  
**Graham Memorial, Coronado**  
**La Jolla Presbyterian**  
**Los Gatos Presbyterian**  
**San Diego First Presbyterian**  
**San Fernando Presbytery**  
**Rancho Bernardo Community**  
**Trinity Spring Valley**  
**Westminster Point Loma**  
**Westmorland Presbyterian**

**Baja Presbyterian Missions, Inc.** is a California nonprofit religious corporation. If you or your church is not a current donor, please consider providing financial support. **Call 619-469-6101.**

### *Joint Efforts Pool Funds For Construction Projects In Tecate, San Jose del Cabo*

Fundraising dollars from the Mexican Presbytery, the congregations and from BPM have been pooled to handle construction projects at two Baja churches.

**Bethel Church in Tecate** is expanding its sanctuary with a \$12,000 budget. **San Jose del Cabo Church** is installing flooring in its sanctuary, hanging ceiling tiles and adding two classrooms with a budget of \$8,900. In both instances, the congregations have shown they are willing to invest their own money in the projects before asking for help from the Taylor construction account held by the Mexican Presbytery.

In cases such as this, the BPM board reviews the projects as part of its fiduciary responsibilities.

## BPM Supports 11 Missions or Churches

As of the most recent meeting of the Presbytery of the Northwest Border in April, there were 11 missions and churches receiving supplemental salary support for their pastors (ordained, licensed or "obreros" studying for ordination) either directly from funds raised by Baja Presbyterian Missions or from pass-through funds from donor churches.

**Adoracion, Chula Vista**  
 Elder Nicasio Rojas  
**Bethel, Tecate**  
 Obr. Victor Hugo Hernandez  
**Canon de Buena Vista**  
 Elders from Ensenada  
**Cristo Viene, Mexicali**  
 Pastor Beimar Santizo  
**Dios Con Nosotros, Tijuana**  
 Rev. Devir Perez  
**El Buen Pastor, Tijuana**  
 Rev. Francisco Juachin  
**Mision Mana, Mexicali**  
 Elders from San Marcos  
**Monte Sion, New Church Dev.**  
 Rev. Job Alameda  
**Nuevo Jerusalem, Ensenada**  
 Rev. Robelio Roblero  
**San Jose del Cabo**  
 Lic. Benjamin Romero  
**San Marcos, Mexicali**  
 Obr. Oran Morales



### Baja Presbyterian Missions, Inc. Executive Committee and Board Members

#### Mission Opportunities...Not Far From Home

*Join us and take part in a wide variety of mission activities -- foreign mission activities -- not far from home!*

Call (619) 469-6101 or email [bobbattenfield@sbcglobal.net](mailto:bobbattenfield@sbcglobal.net) for more information.

President  
 Vice President  
 Secretary  
 Treasurer

Bob Battenfield, Fletcher Hills PC  
 Gary Lorentzen, First PC El Cajon  
 Jim Hancock, Fletcher Hills PC  
 Jack Shelver, Faith PC, San Diego

Members:

Sally Johnson, Westmorland PC  
 Doris Scoville, Presbyterian Women, Faith PC

Nicasio Rojas, Representative  
 Presbytery of Northwest Border,  
 National Presbyterian Church of Mexico  
 Rev William Soldwisch, Missionary  
 Pueblos Hermanos, Presbyterian  
 Border Ministry, PC(USA)